



BLACK FOREST STUDIOS

G E R M A N Y



BLACK FOREST STUDIOS

THE NO.1 EVENT LOCATION IN THE REGION

Located in the heart of Europe, our location provides plenty of space, stage equipment and services for your next event!

Whatever your next event will be: we've got you covered! With flexible spaces in different sizes, and production office space as well as event services and technical support, our studio in the Black Forest in Southern Germany meets your expectations on highest standards.




BLACK FOREST STUDIOS
GERMANY

Event Space

Our flexible studios in different sizes offer more than 1.200 m² of space with a 24/7 access on 10.000 m² of property.

All stages are heated and connected to wardrobe/make-up rooms. On-site parking and free Wi-Fi high-speed Internet access are available throughout the facility. Stream your event content via ethernet in real-time between stages or around the globe.

Full security is available as well as concierge and transportation services.



Front Entrance
Decoration 'Hollywood'



Stage 1



Illuminated Studio



Main Entrance



Backyard/Studio Lot with Foodtrucks



Stage 1 - Gala Dinner



Stage 1 - Showact/Streaming



Front Patio with Fountain



Main Entrance with Red Carpet and Photo Wall



Stage 1 – Backlot



Winter at the Black Forest Studios



Studio 2



Studio 3



Studio 4



Studio 6

Stage 1

GROUND FLOOR
CAPACITY UP TO 800 PAX (500 SEATED)

Total of 677 m² (7,287 sq ft)

Stage 1 423 m² (4,553 sq ft)

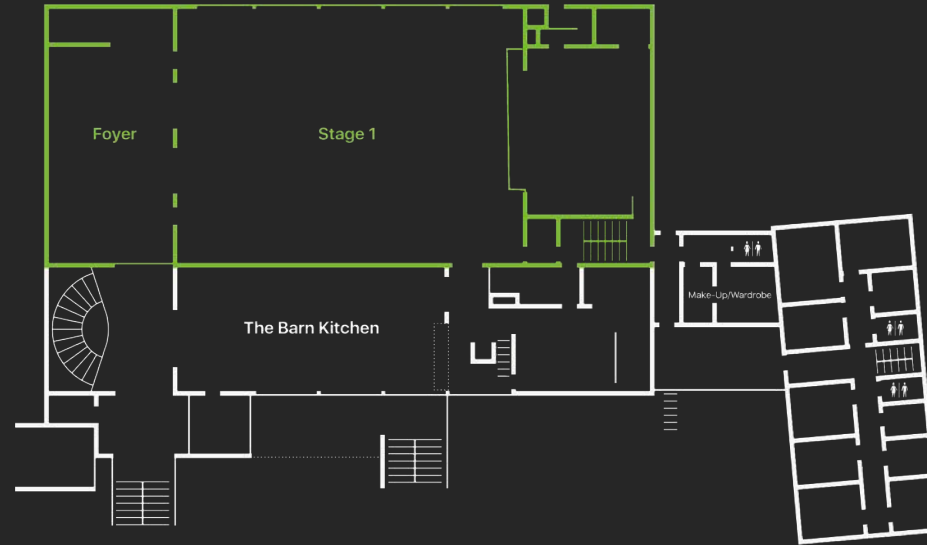
Foyer 144 m² (1,550 sq ft)

Stage 110 m² (1,184 sq ft)

Gallery 41 m² (441 sq ft)

23,5 m x 18 m (77 x 59 ft)

Hight 6,23 m (20.4 ft)



Specifications

- wooden floors
- air ventilation system, heating
- large glass windows for daylight and views
- High-Speed Internet: Ethernet and Wi-Fi
- 2x 63A CEE wall outlet à 400V
- Lighting Grids (max. weight capacity 2x 1.000 kg/2,200 lbs)
- 8 Fresnel lights, 4 profiler, 4 moving lights (DMX)
- Control Room (MA lighting controller)
- Fohn Line Source sound system
- 360-degree duvetyn curtain system
- 6k Beamer/ Rear Projection Screen
- separate stage incl. automated curtain system and rigs
- fully accessible on ground floor
- Gallery on first floor with separate access



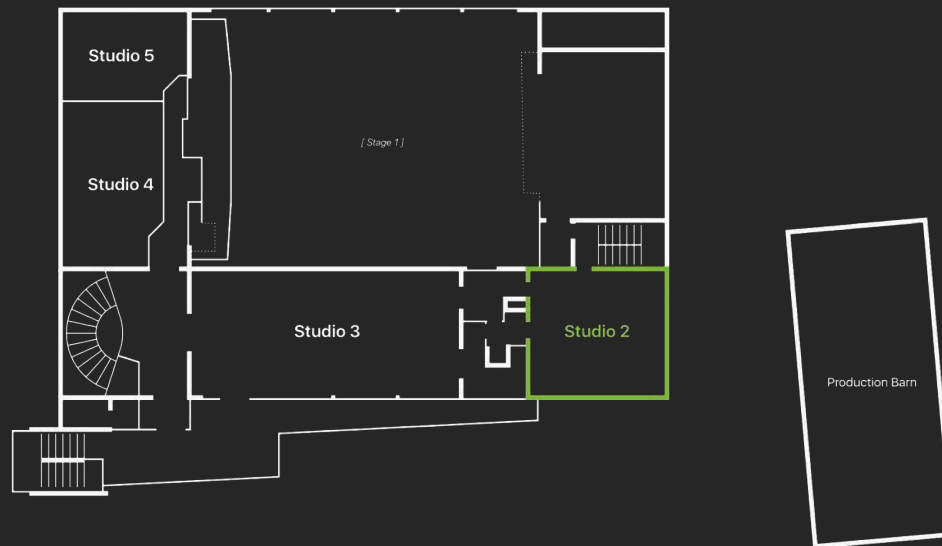
Studio 2

GREEN SCREEN STUDIO, 1st FLOOR

80,75 m² (869 sq ft)

9,5 m x 8,5 m (31 x 27 ft)

Hight 3,20 m (10.5 ft)



Specifications

- 360Backdrop photowall system (white/grey/green)
- Heated studio
- Large glass windows for daylight and views
- High-speed Internet: Ethernet and Wi-Fi
- 360-degree duvetyn curtain system
- Lighting grids
- Direct access to backstage and make-up room
- Elevator access

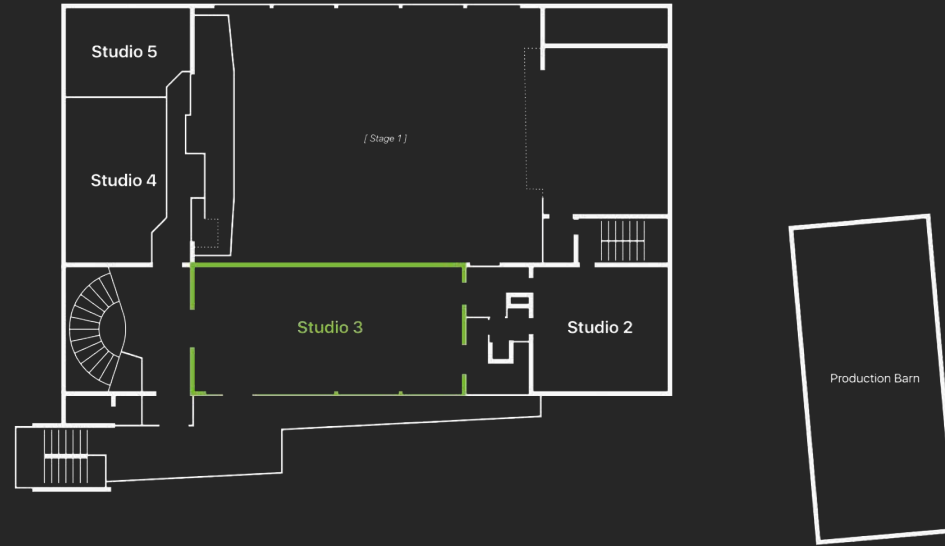
- Ideal for photo and table top shoots
- Live streaming set-up available



Studio 3

1st FLOOR
CAPACITY UP TO 120 PAX

165,5 m² (1,781.4 sq ft)
19 m x 8,7 m (62 x 28.5 ft)
Hight 3,42 m (11.5 ft)



Specifications

- Heated studio, 360-degree curtains
- Large glass windows for daylight and views
- Outside patio
- High-speed Internet: Ethernet and Wi-Fi
- Elevator access
- Separate entrance
- Beamer, Screen



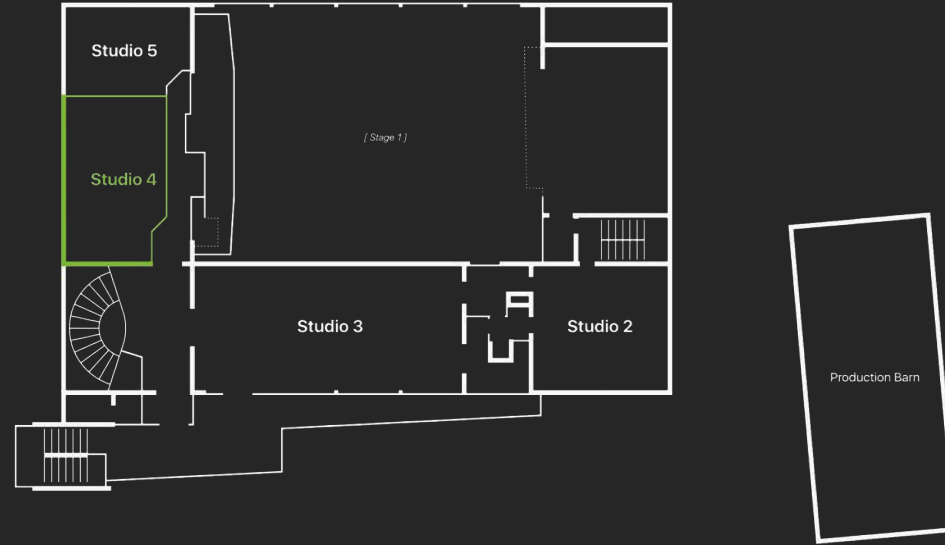
Studio 4

1st FLOOR

78 m² (840 sq ft)

11,6 m x 6,7 m (38 x 22 ft)

Hight 3,20 m (10.5 ft)



Specifications

- Heated studio
- High-speed Internet: LAN and wireless LAN
- flexible room with duvetyn curtains
- graffiti wall
- brick stone wall backdrop
- Elevator access



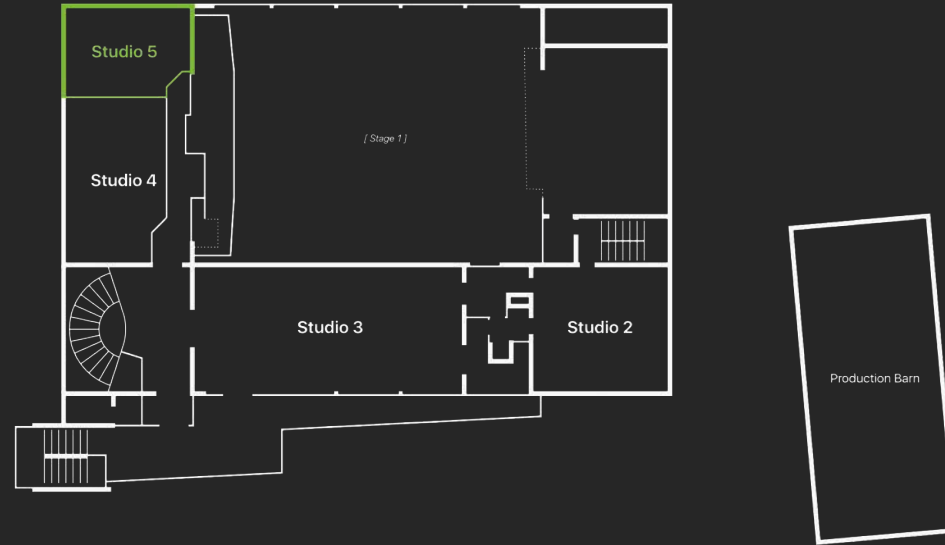
Studio 5

1st FLOOR

50 m² (538 sq ft)

9 m x 5,6 m (29.5 x 18,3 ft)

Hight 3,20 m (10.5 ft)



Specifications

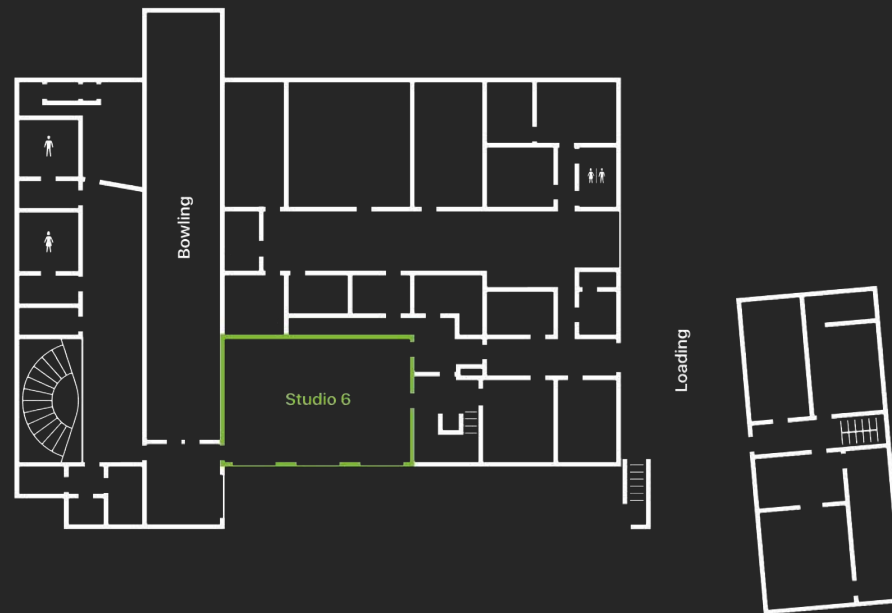
- Fully equipped conference room
- 75' TV screen, fully accessible
- White Board
- Heated studio
- High-speed Internet: LAN and wireless LAN
- wooden wall backdrop
- Elevator access
- Use as conference room with 4 tables and 12 chairs



Studio 6

SOUS-TERRAIN
CAPACITY UP TO 100 PAX

108 m² (1,162,5 sq ft)
13,2 m x 8,2 m (43.3 x 26,9 ft)
Hight 2,75 m (9 ft)



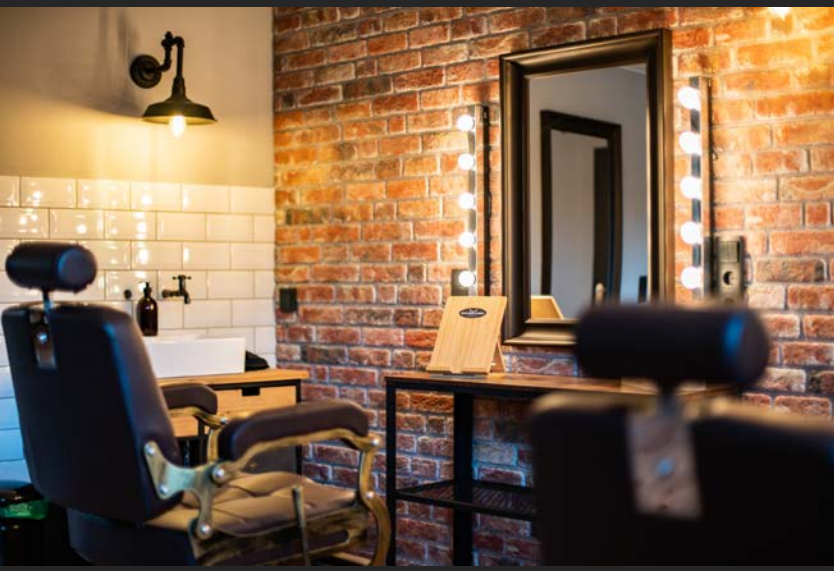
Specifications

- Sous-terrain with separate entrance, foyer with bar area
- Outside patio for special event
- Heated studio
- High-speed Internet: LAN and wireless LAN
- mirror wall for dancing, rehearsal and choreography
- Elevator access



Make-Up & Wardrobe

Need space for your host or show act to prepare? Our make-up and wardrobe rooms offer an inspiring environment with high-speed internet access. Come in and get comfortable.



The Barn Kitchen

The heart of the Black Forest Studios is The Barn Kitchen, our Coffee Shop. This exclusive space can be rented on an hourly or daily base for events with up to 120 guests. It is equipped with cozy booths, table and bar seating, sound and light systems and a dance floor!

We offer full catering and additional event services. Contact us!

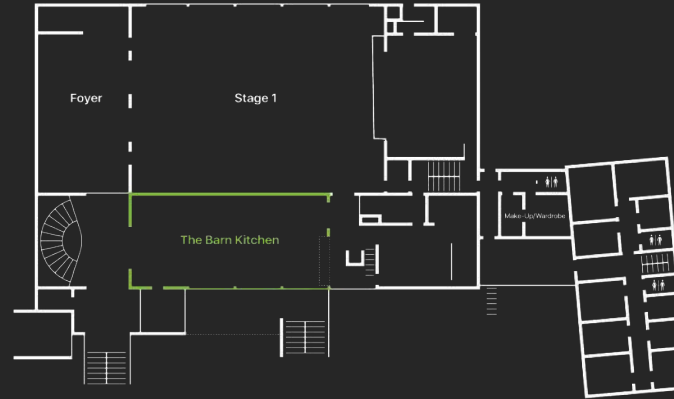
The Barn Kitchen

COFFEE SHOP & SOCIAL HOUSE

The Barn Kitchen

GROUND LEVEL
CAPACITY UP TO 120 PAX

108 m² (1,162 sq ft)
13,2 m x 8,2 m (43.2 x 26.9 ft)
Height 3,20 m (10.5 ft)



Specifications

- Fully furnished and equipped coffee shop
- High-speed Internet: ethernet and Wi-Fi
- Elevator access
- 50+ seats plus bar area and window stools
- 3 separate booths with 2 large TV screens
- Pool table
- Band area with lighting grid, disco lights
- Multiple power outlets





The Barn Kitchen – Entrance



The Barn Kitchen – Band Stage



The Barn Kitchen – Dance Floor



The Barn Kitchen – Buffet



The Barn Kitchen – Event Apero



The Barn Kitchen – Late Night



The Barn Kitchen – Decoration



The Barn Kitchen – Outside



BLACK FOREST STUDIOS
GERMANY



PROJECT ROOMS

Depending on the size of your event, you might feel the need for additional on-site offices for your team – or your client's CEO needs a quiet space to handle his phone calls? No problem. We have plenty of offices in different sizes and conference rooms with high-speed internet access and co-working space – first-class production conditions in an inspiring environment that can be rented on an hourly or daily base.



Black Forest Studios

SPACE MOODS



Amenities & Accommodation

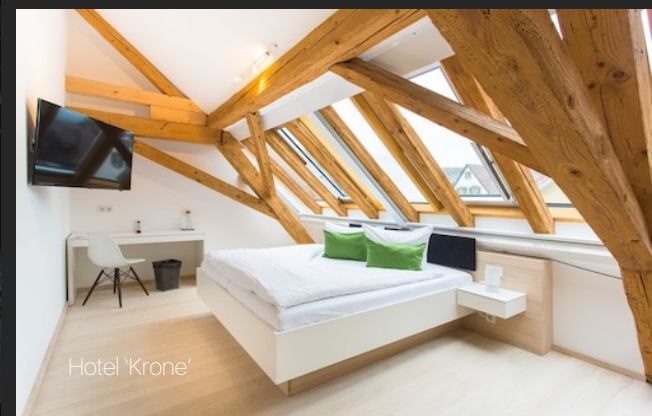
For your guest's accommodation, we can support you with hotels and apartment options in different categories within walking, cycling or short shuttling distance.



Villa 'Chalet Noir'



Hotel 'Sonne'



Hotel 'Krone'



Hotel 'Die Halde'

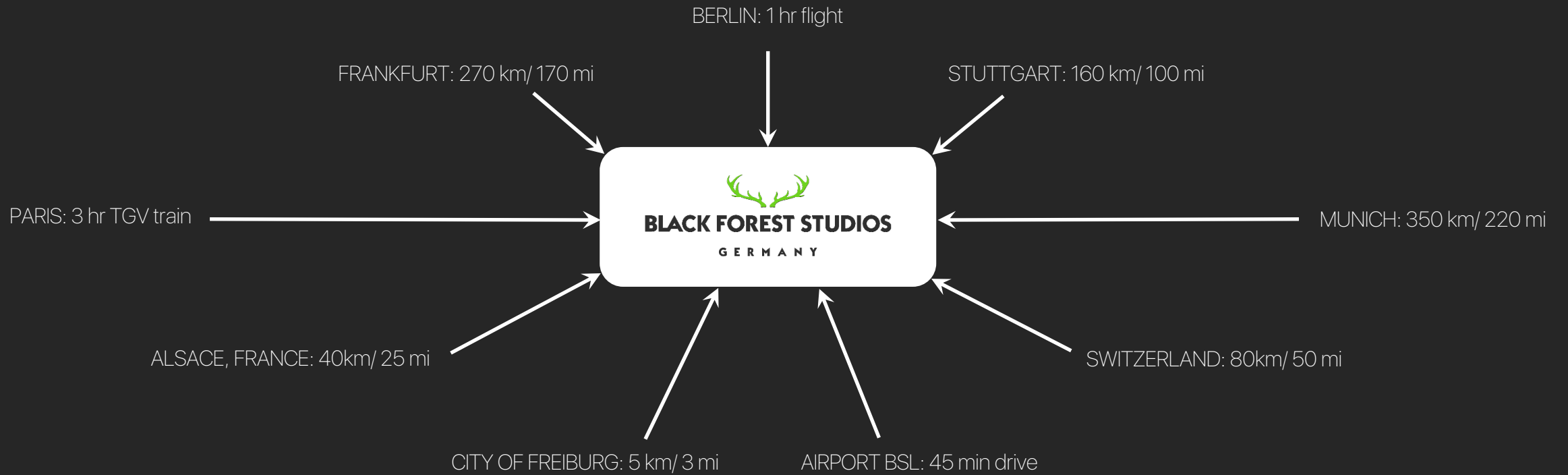


Hotel 'Rainhofscheune'



Hotel 'Bären'

How to reach us.





PLAN YOUR NEXT EVENT AT THE
Black Forest Studios



BLACK FOREST STUDIOS

G E R M A N Y

Black Forest Studios GmbH

Film Studio & Event Location

Dietenbacher Str. 20-22

79199 Kirchzarten, Germany

+49 (7661) 988 600-0

contact@blackforest-studios.com

www.blackforest-studios.com